

## Product datasheet for **AP17930PU-N**

### CCR3 Rabbit Polyclonal Antibody

#### Product data:

Product Type:	Primary Antibodies
Applications:	WB
Recommended Dilution:	ELISA: 1/1,000. Western blotting: 1/100 - 1/500.
Reactivity:	Human
Host:	Rabbit
Clonality:	Polyclonal
Immunogen:	KLH conjugated synthetic peptide selected from the Center region of human CCR3
Specificity:	This antibody reacts to CD193 / CCR3.
Formulation:	PBS with 0.09% (W/V) sodium azide State: Liquid purified Ig
Concentration:	lot specific
Purification:	Affinity chromatography on Protein A
Conjugation:	Unconjugated
Storage:	Store the antibody undiluted at 2-8°C for one month or (in aliquots) at -20°C for longer. Avoid repeated freezing and thawing.
Stability:	Shelf life: one year from despatch.
Gene Name:	C-C motif chemokine receptor 3
Database Link:	<a href="#">Entrez Gene 1232 Human P51677</a>
Background:	CCR3 is a receptor for C-C type chemokines. It belongs to family 1 of the G protein-coupled receptors. This receptor binds and responds to a variety of chemokines, including eotaxin (CCL11), eotaxin-3 (CCL26), MCP-3 (CCL7), MCP-4 (CCL13), and RANTES (CCL5). It is highly expressed in eosinophils and basophils, and is also detected in TH1 and TH2 cells, as well as in airway epithelial cells. This receptor may contribute to the accumulation and activation of eosinophils and other inflammatory cells in the allergic airway. It is also known to be an entry co-receptor for HIV-1.
Synonyms:	C-C chemokine receptor type 3, C-C CKR-3, CC-CKR-3, CCR-3, CKR3, CMKBR3

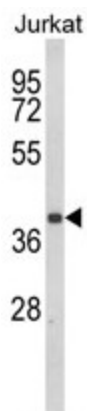


[View online »](#)

Protein Families: Druggable Genome, GPCR, Transmembrane

Protein Pathways: Chemokine signaling pathway, Cytokine-cytokine receptor interaction

### Product images:



Western blot analysis of CCR3 Antibody (Center) in Jurkat cell line lysates (35ug/lane). CCR3 (arrow) was detected using the purified Pab.