

Product datasheet for **AP17929PU-N**

CCL3 (C-term) Rabbit Polyclonal Antibody

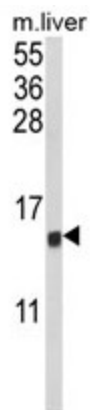
Product data:

Product Type:	Primary Antibodies
Applications:	WB
Recommended Dilution:	ELISA: 1/1,000. Western blotting: 1/100 - 1/500.
Reactivity:	Human, Mouse
Host:	Rabbit
Clonality:	Polyclonal
Immunogen:	KLH conjugated synthetic peptide selected from the C-terminal region of human CCL3
Specificity:	This antibody reacts to MIP1 alpha / CCL3.
Formulation:	PBS with 0.09% (W/V) sodium azide State: Liquid purified Ig
Concentration:	lot specific
Purification:	Affinity chromatography on Protein A
Conjugation:	Unconjugated
Storage:	Store the antibody undiluted at 2-8°C for one month or (in aliquots) at -20°C for longer. Avoid repeated freezing and thawing.
Stability:	Shelf life: one year from despatch.
Gene Name:	C-C motif chemokine ligand 3
Database Link:	Entrez Gene 6348 Human P10147
Background:	Macrophage inflammatory protein-1 is a so-called monokine that is involved in the acute inflammatory state in the recruitment and activation of polymorphonuclear leukocytes.
Synonyms:	CCL-3, MIP-1-alpha, C-C motif chemokine 3, MIP1A, Small-inducible cytokine A3, SCYA3, LD78 alpha, G0S19-1 protein
Protein Families:	Druggable Genome, Secreted Protein
Protein Pathways:	Chemokine signaling pathway, Cytokine-cytokine receptor interaction, Toll-like receptor signaling pathway



[View online »](#)

Product images:



Western blot analysis of CCL3 Antibody (C-term) in mouse liver tissue lysates (35ug/lane). CCL3 (arrow) was detected using the purified Pab.