

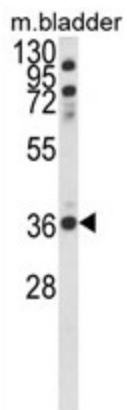
## Product datasheet for **AP17927PU-N**

### Coiled Coil Domain Containing Protein 3 (CCDC3) (C-term) Rabbit Polyclonal Antibody

#### Product data:

<b>Product Type:</b>	Primary Antibodies
<b>Applications:</b>	WB
<b>Recommended Dilution:</b>	ELISA: 1/1,000. Western blotting: 1/100 – 1/500.
<b>Reactivity:</b>	Human, Mouse
<b>Host:</b>	Rabbit
<b>Clonality:</b>	Polyclonal
<b>Immunogen:</b>	KLH conjugated synthetic peptide selected from the C-term region of human CCDC3
<b>Specificity:</b>	This antibody reacts to CCDC3.
<b>Formulation:</b>	PBS with 0.09% (W/V) sodium azide State: Liquid purified Ig
<b>Concentration:</b>	lot specific
<b>Purification:</b>	Affinity chromatography on Protein A
<b>Conjugation:</b>	Unconjugated
<b>Storage:</b>	Store the antibody undiluted at 2–8°C for one month or (in aliquots) at –20°C for longer. Avoid repeated freezing and thawing.
<b>Stability:</b>	Shelf life: one year from despatch.
<b>Gene Name:</b>	coiled-coil domain containing 3
<b>Database Link:</b>	<a href="#">Entrez Gene 83643 Human</a> <a href="#">Q9BQI4</a>
<b>Synonyms:</b>	Favine



**Product images:**

Western blot analysis of CCDC3 Antibody (C-term) in mouse bladder tissue lysates (35ug/lane). CCDC3 (arrow) was detected using the purified Pab.