

Product datasheet for **AP17920PU-N**

CARD4 (NOD1) (C-term) Rabbit Polyclonal Antibody

Product data:

Product Type:	Primary Antibodies
Applications:	IHC, WB
Recommended Dilution:	ELISA: 1/1,000. Western blotting: 1/100-1/500. Immunohistochemistry: 1/50-1/100.
Reactivity:	Human
Host:	Rabbit
Clonality:	Polyclonal
Immunogen:	KLH conjugated synthetic peptide selected from the C-terminal region of Human CARD4.
Specificity:	This antibody recognizes CARD4 / NOD1 (C-term).
Formulation:	PBS with 0.09% (W/V) Sodium Azide as preservative. State: Purified State: Liquid purified Ig fraction.
Concentration:	lot specific
Purification:	Affinity Chromatography on Protein A.
Conjugation:	Unconjugated
Storage:	Store the antibody undiluted at 2-8°C for one month or (in aliquots) at -20°C for longer. Avoid repeated freezing and thawing.
Stability:	Shelf life: one year from despatch.
Gene Name:	nucleotide binding oligomerization domain containing 1
Database Link:	Entrez Gene 10392 Human Q9Y239



[View online »](#)

Background: CARD4 is a member of the NOD (nucleotide-binding oligomerization domain) family. This member is a cytosolic protein. It contains an N-terminal caspase recruitment domain (CARD), a centrally located nucleotide-binding domain (NBD), and 10 tandem leucine-rich repeats (LRRs) in its C terminus. The CARD is involved in apoptotic signaling, LRRs participate in protein-protein interactions, and mutations in the NBD may affect the process of oligomerization and subsequent function of the LRR domain. This protein is an intracellular pattern-recognition receptor (PRR) that initiates inflammation in response to a subset of bacteria through the detection of bacterial diaminopimelic acid.

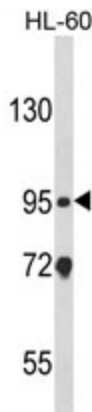
Synonyms: CARD4; CLR7.1; NLRC1

Note: Calculated Molecular Weight: 107691 Da

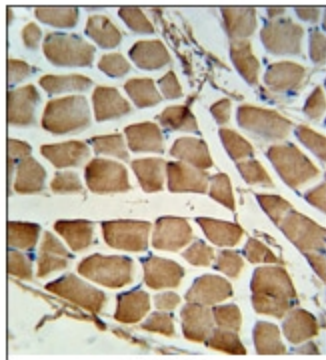
Protein Families: Druggable Genome

Protein Pathways: Epithelial cell signaling in Helicobacter pylori infection, NOD-like receptor signaling pathway

Product images:



Western blot analysis of CARD4 Antibody (C-term) in HL-60 cell line lysates (35ug/lane). CARD4 (arrow) was detected using the purified Pab.



CARD4 antibody staining of Formalin-Fixed, Paraffin-Embedded Human skeletal muscle tissue. This Antibody was peroxidase-conjugated to the secondary antibody, followed by DAB staining. This data demonstrates the use of this antibody for immunohistochemistry; clinical relevance has not been evaluated.