

Product datasheet for **AP17919PU-N**

CANT1 (N-term) Rabbit Polyclonal Antibody

Product data:

Product Type:	Primary Antibodies
Applications:	WB
Recommended Dilution:	ELISA: 1/1,000. Western blot: 1/100~1/500.
Reactivity:	Human
Host:	Rabbit
Clonality:	Polyclonal
Immunogen:	KLH conjugated synthetic peptide selected from the N-terminal region of Human CANT1/SHAPY.
Specificity:	This antibody is specific to CANT1/SHAPY (N-term).
Formulation:	PBS containing 0.09% (W/V) Sodium Azide as preservative. State: Liquid purified Ig fraction.
Concentration:	lot specific
Purification:	Protein A Chromatography followed by peptide affinity purification.
Conjugation:	Unconjugated
Storage:	Store the antibody undiluted at 2-8°C for one month or (in aliquots) at -20°C for longer. Avoid repeated freezing and thawing.
Stability:	Shelf life: one year from despatch.
Gene Name:	calcium activated nucleotidase 1
Database Link:	Entrez Gene 124583 Human Q8WWQ1
Background:	CANT1 belongs to the apyrase family. It functions as a calcium-dependent nucleotidase with a preference for UDP. Human soluble calcium activated nucleotidase 1 is the human homologue of soluble apyrases found in blood sucking insects in order to inhibit host blood clotting. In humans it may be involved in protein glycosylation. The order of activity with different substrates is UDP > GDP > UTP > GTP. It has very low activity towards ADP and even lower activity towards ATP. It does not hydrolyze AMP and GMP.
Synonyms:	SCAN-1, Apyrase homolog



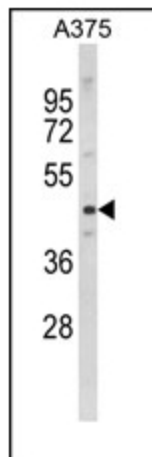
[View online >](#)

Note: Calculated MW: 44840 Da

Protein Families: Secreted Protein

Protein Pathways: Purine metabolism, Pyrimidine metabolism

Product images:



Western blot analysis of CANT1 Antibody (N-term) in A375 cell line lysates (35ug/lane). CANT1 (arrow) was detected using the purified Pab.