

## Product datasheet for **AP17918PU-N**

### **CALM1 (C-term) Rabbit Polyclonal Antibody**

#### **Product data:**

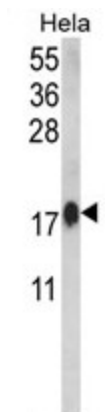
<b>Product Type:</b>	Primary Antibodies
<b>Applications:</b>	WB
<b>Recommended Dilution:</b>	ELISA: 1/1,000. Western blotting: 1/100 - 1/500.
<b>Reactivity:</b>	Human
<b>Host:</b>	Rabbit
<b>Clonality:</b>	Polyclonal
<b>Immunogen:</b>	KLH conjugated synthetic peptide selected from the C-terminal region of human CALM1
<b>Specificity:</b>	This antibody reacts to Calmodulin.
<b>Formulation:</b>	PBS with 0.09% (W/V) sodium azide State: Liquid purified Ig
<b>Concentration:</b>	lot specific
<b>Purification:</b>	Affinity chromatography on Protein A
<b>Conjugation:</b>	Unconjugated
<b>Storage:</b>	Store the antibody undiluted at 2-8°C for one month or (in aliquots) at -20°C for longer. Avoid repeated freezing and thawing.
<b>Stability:</b>	Shelf life: one year from despatch.
<b>Gene Name:</b>	calmodulin 1 (phosphorylase kinase, delta)
<b>Database Link:</b>	<a href="#">Entrez Gene 805 Human</a> <a href="#">Entrez Gene 801 Human</a> <a href="#">P0DP23</a>
<b>Background:</b>	CALM1 is a member of the EF-hand calcium-binding protein family. Calmodulin mediates the control of a large number of enzymes and other proteins by Ca(2+). Among the enzymes to be stimulated by the calmodulin-Ca(2+) complex are a number of protein kinases and phosphatases. Together with CEP110 and centrin, is involved in a genetic pathway that regulates the centrosome cycle and progression through cytokinesis.
<b>Synonyms:</b>	CALM1, CALM, CAM, CAM1
<b>Protein Families:</b>	Druggable Genome



[View online »](#)

**Protein Pathways:**

Alzheimer's disease, Calcium signaling pathway, Glioma, GnRH signaling pathway, Insulin signaling pathway, Long-term potentiation, Melanogenesis, Neurotrophin signaling pathway, Olfactory transduction, Oocyte meiosis, Phosphatidylinositol signaling system, Vascular smooth muscle contraction

**Product images:**

Western blot analysis of CALM1 Antibody (C-term) (C) in HeLa cell line lysates (35ug/lane). CALM1 (arrow) was detected using the purified Pab. (2ug/ml)