

Product datasheet for **AP17917PU-N**

CACNA2D1 (N-term) Rabbit Polyclonal Antibody

Product data:

Product Type:	Primary Antibodies
Applications:	FC, WB
Recommended Dilution:	ELISA: 1/1,000. Flow Cytometry: /10-1/50. Western blotting: 1/100-1/500.
Reactivity:	Human
Host:	Rabbit
Clonality:	Polyclonal
Immunogen:	KLH conjugated synthetic peptide selected from the N-terminal region of human CACNA2D1
Specificity:	This antibody CACNA2D1 (N-term).
Formulation:	PBS with 0.09% (W/V) Sodium Azide as preservative State: Liquid purified Ig fraction
Concentration:	lot specific
Purification:	Affinity chromatography on Protein A
Conjugation:	Unconjugated
Storage:	Store the antibody undiluted at 2-8°C for one month or (in aliquots) at -20°C for longer. Avoid repeated freezing and thawing.
Stability:	Shelf life: one year from despatch.
Gene Name:	calcium voltage-gated channel auxiliary subunit alpha2delta 1
Database Link:	Entrez Gene 781 Human P54289
Background:	CACNA2D1 is a member of the alpha-2/delta subunit family, a protein in the voltage-dependent calcium channel complex. Calcium channels mediate the influx of calcium ions into the cell upon membrane polarization and consist of a complex of alpha-1, alpha-2/delta, beta, and gamma subunits in a 1:1:1:1 ratio. Research on a highly similar protein in rabbit suggests the protein described in this record is cleaved into alpha-2 and delta subunits.
Synonyms:	CACNL2A, CCHL2A, MHS3
Note:	Calculated Molecular Weight: 123183 Da

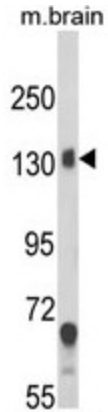


[View online »](#)

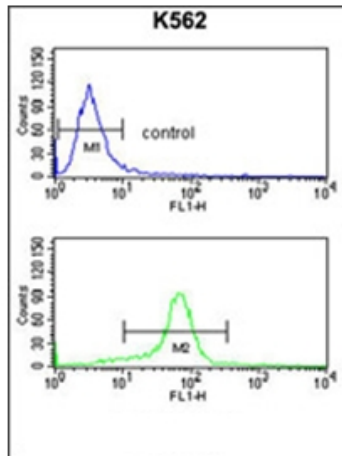
Protein Families: Druggable Genome, Ion Channels: Other

Protein Pathways: Arrhythmogenic right ventricular cardiomyopathy (ARVC), Cardiac muscle contraction, Dilated cardiomyopathy, Hypertrophic cardiomyopathy (HCM), MAPK signaling pathway

Product images:



Western blot analysis of CACNA2D1 Antibody (N-term) in mouse brain tissue lysates (35ug/lane). CACNA2D1 (arrow) was detected using the purified Pab.



CACNA2D1 Antibody (N-term) Flow Cytometry analysis of K562 cells (bottom histogram) compared to a negative control cell (top histogram). FITC-conjugated Goat-anti-Rabbit secondary antibodies were used for the analysis.