

Product datasheet for **AP17914PU-N**

Complement C5 (C5) (N-term) Rabbit Polyclonal Antibody

Product data:

Product Type:	Primary Antibodies
Applications:	FC, IHC, WB
Recommended Dilution:	ELISA: 1/1,000. Western blotting: 1/1,000. Immunohistochemistry: 1/50-1/100. Flow Cytometry: 1/10-1/50.
Reactivity:	Human
Host:	Rabbit
Clonality:	Polyclonal
Immunogen:	KLH conjugated synthetic peptide between 253-281 amino acids from the N-terminal region of human C5.
Specificity:	This antibody recognizes Complement C5.
Formulation:	PBS State: Liquid purified Ig fraction Preservative: 0.09% (W/V) Sodium Azide
Concentration:	lot specific
Purification:	Affinity Chromatography on Protein A
Conjugation:	Unconjugated
Storage:	Store undiluted at 2-8°C for one month or (in aliquots) at -20°C for longer. Avoid repeated freezing and thawing.
Stability:	Shelf life: one year from despatch.
Gene Name:	complement component 5
Database Link:	Entrez Gene 727 Human P01031



[View online »](#)

Background:

C5 is the fifth component of complement, which plays an important role in inflammatory and cell killing processes. This protein is comprised of alpha and beta polypeptide chains that are linked by a disulfide bridge. An activation peptide, C5a, which is an anaphylatoxin that possesses potent spasmogenic and chemotactic activity, is derived from the alpha polypeptide via cleavage with a convertase. The C5b macromolecular cleavage product can form a complex with the C6 complement component, and this complex is the basis for formation of the membrane attack complex, which includes additional complement components.

Synonyms:

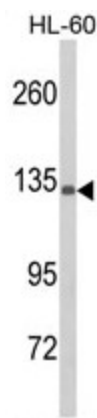
CPAMD4, Complement component 5

Protein Families:

Druggable Genome

Protein Pathways:

Complement and coagulation cascades, Prion diseases, Systemic lupus erythematosus

Product images:

Western blot analysis of C5 Antibody (N-term) in HL-60 cell line lysates (35ug/lane). C5 (arrow) was detected using the purified Pab. (2ug/ml)