

Product datasheet for **AP17908PU-N**

SPATIAL (TBATA) (C-term) Rabbit Polyclonal Antibody

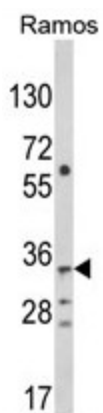
Product data:

Product Type:	Primary Antibodies
Applications:	WB
Recommended Dilution:	ELISA: 1/1,000. Western blotting: 1/100 - 1/500.
Reactivity:	Human
Host:	Rabbit
Clonality:	Polyclonal
Immunogen:	KLH conjugated synthetic peptide selected from the C-terminal region of human C10orf27
Specificity:	This antibody reacts to C10orf27.
Formulation:	PBS with 0.09% (W/V) sodium azide State: Liquid purified Ig
Concentration:	lot specific
Purification:	Affinity chromatography on Protein A
Conjugation:	Unconjugated
Storage:	Store the antibody undiluted at 2-8°C for one month or (in aliquots) at -20°C for longer. Avoid repeated freezing and thawing.
Stability:	Shelf life: one year from despatch.
Gene Name:	thymus, brain and testes associated
Database Link:	Entrez Gene 219793 Human Q96M53
Background:	C10orf27 may play a role in spermatid differentiation.
Synonyms:	C10orf27



[View online »](#)

Product images:



Western blot analysis of C10orf27 Antibody (C-term) in Ramos cell line lysates (35ug/lane). C10orf27 (arrow) was detected using the purified Pab.