

Product datasheet for **AP17900PU-N**

Bim (BCL2L11) (Center) Rabbit Polyclonal Antibody

Product data:

Product Type:	Primary Antibodies
Applications:	ELISA, FC, IHC, WB
Recommended Dilution:	ELISA: 1/1,000. Western blotting: 1/1000. Immunohistochemistry: 1/10-1/50. Flow Cytometry: 1/10-1/50.
Reactivity:	Human
Host:	Rabbit
Clonality:	Polyclonal
Immunogen:	KLH conjugated synthetic peptide 134-160 aa selected from the Center region of Human BCL2L11
Specificity:	This antibody recognizes Bcl-2-like 11 (BCL2L11).
Formulation:	PBS with 0.09% (W/V) Sodium Azide State: Liquid purified IgG fraction
Concentration:	lot specific
Purification:	Protein A column followed by Peptide Affinity Chromatography
Conjugation:	Unconjugated
Storage:	Store the antibody undiluted at 2-8°C for one month or (in aliquots) at -20°C for longer. Avoid repeated freezing and thawing.
Stability:	Shelf life: one year from despatch.
Predicted Protein Size:	22171 Da
Gene Name:	BCL2 like 11
Database Link:	Entrez Gene 10018 Human O43521



[View online »](#)

Background:

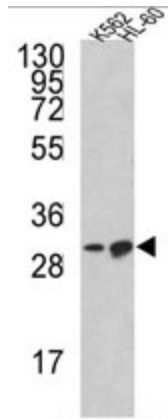
BCL2L11 belongs to the BCL-2 protein family. BCL-2 family members form hetero- or homodimers and act as anti- or pro-apoptotic regulators that are involved in a wide variety of cellular activities. This protein contains a Bcl-2 homology domain 3 (BH3). It has been shown to interact with other members of the BCL-2 protein family, including BCL2, BCL2L1/BCL-X(L), and MCL1, and to act as an apoptotic activator.

Synonyms:

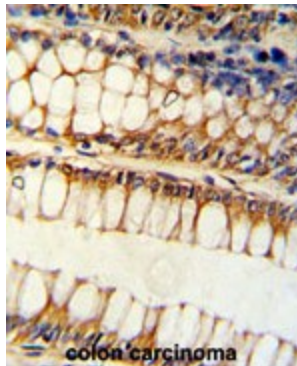
Bcl2-L-11, BCL2L11, BIM, BimEL, BimL, BimS

Protein Families:

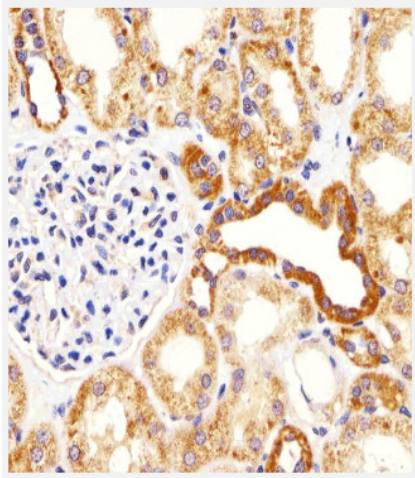
Druggable Genome

Product images:


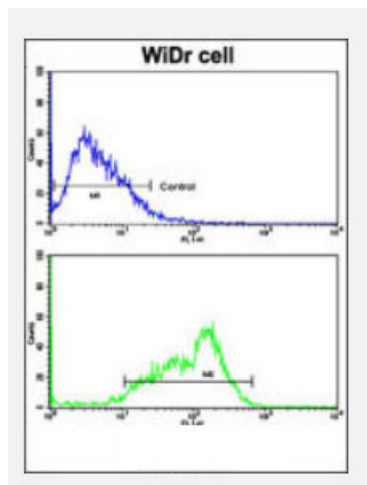
Western blot analysis of BCL2L11 Antibody (Center) in K562, HL-60 cell line lysates (35ug/lane). BCL2L11 (arrow) was detected using the purified Pab.



Formalin-fixed and paraffin-embedded human colon carcinoma reacted with BCL2L11 Antibody (Center), which was peroxidase-conjugated to the secondary antibody, followed by DAB staining. This data demonstrates the use of this antibody for immunohistochemistry; clinical relevance has not been evaluated.



Immunohistochemical analysis of paraffin-embedded H. kidney section using BCL2L11 Antibody (Center) (.). Antibody was diluted at 1/25 dilution. A undiluted biotinylated goat polyvalent antibody was used as the secondary, followed by DAB staining.



Flow cytometric analysis of WiDr cells using BCL2L11 Antibody (Center) (bottom histogram) compared to a negative control cell (top histogram). FITC-conjugated goat-anti-rabbit secondary antibodies were used for the analysis.