

## Product datasheet for **AP17899PU-N**

### **BAT4 (GPANK1) (C-term) Rabbit Polyclonal Antibody**

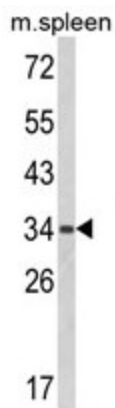
#### **Product data:**

<b>Product Type:</b>	Primary Antibodies
<b>Applications:</b>	WB
<b>Recommended Dilution:</b>	ELISA: 1/1,000. Western blotting: 1/100 - 1/500.
<b>Reactivity:</b>	Human
<b>Host:</b>	Rabbit
<b>Clonality:</b>	Polyclonal
<b>Immunogen:</b>	KLH conjugated synthetic peptide selected from the C-terminal region of human BAT4
<b>Specificity:</b>	This antibody reacts to ANKRD59 / BAT4.
<b>Formulation:</b>	PBS with 0.09% (W/V) sodium azide State: Liquid purified Ig
<b>Concentration:</b>	lot specific
<b>Purification:</b>	Affinity chromatography on Protein A
<b>Conjugation:</b>	Unconjugated
<b>Storage:</b>	Store the antibody undiluted at 2-8°C for one month or (in aliquots) at -20°C for longer. Avoid repeated freezing and thawing.
<b>Stability:</b>	Shelf life: one year from despatch.
<b>Gene Name:</b>	G-patch domain and ankyrin repeats 1
<b>Database Link:</b>	<a href="#">Entrez Gene 7918 Human</a> <a href="#">O95872</a>
<b>Background:</b>	BAT4 (HLA-B-associated transcript 4) contains two ANK repeats and one G-patch domain. It is thought to be involved in some aspects of immunity.
<b>Synonyms:</b>	G5 protein, GPATCH10



[View online »](#)

## Product images:



Western blot analysis of BAT4 Antibody (C-term) in mouse spleen tissue lysates (35ug/lane). BAT4 (arrow) was detected using the purified Pab.