

Product datasheet for **AP17897PU-N**

BANK1 (Center) Rabbit Polyclonal Antibody

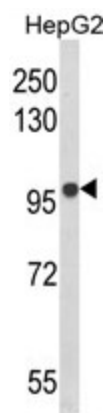
Product data:

Product Type:	Primary Antibodies
Applications:	WB
Recommended Dilution:	ELISA: 1/1,000. Western blotting: 1/100 - 1/500.
Reactivity:	Human
Host:	Rabbit
Clonality:	Polyclonal
Immunogen:	KLH conjugated synthetic peptide selected from the Center region of human BANK1
Specificity:	This antibody reacts to BANK1.
Formulation:	PBS with 0.09% (W/V) sodium azide State: Liquid purified Ig
Concentration:	lot specific
Purification:	Affinity chromatography on Protein A
Conjugation:	Unconjugated
Storage:	Store the antibody undiluted at 2-8°C for one month or (in aliquots) at -20°C for longer. Avoid repeated freezing and thawing.
Stability:	Shelf life: one year from despatch.
Gene Name:	B-cell scaffold protein with ankyrin repeats 1
Database Link:	Entrez Gene 55024 Human Q8NDB2
Background:	BANK1 is a B-cell-specific scaffold protein and LYN (MIM 165120) tyrosine kinase substrate that promotes tyrosine phosphorylation of inositol 1,4,5-trisphosphate receptors.
Synonyms:	BANK; FLJ20706; FLJ34204



[View online »](#)

Product images:



Western blot analysis of BANK1 Antibody (Center) in HepG2 cell line lysates (35ug/lane). BANK1 (arrow) was detected using the purified Pab.