

Product datasheet for **AP17896PU-N**

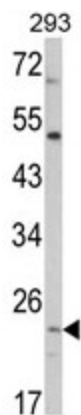
ATP5PO (N-term) Rabbit Polyclonal Antibody

Product data:

Product Type:	Primary Antibodies
Applications:	WB
Recommended Dilution:	ELISA: 1/1,000. Western blotting: 1/100 - 1/500.
Reactivity:	Human
Host:	Rabbit
Clonality:	Polyclonal
Immunogen:	KLH conjugated synthetic peptide selected from the N-terminal region of human ATP5O
Specificity:	This antibody reacts to ATP synthase subunit O.
Formulation:	PBS with 0.09% (W/V) sodium azide State: Liquid purified Ig
Concentration:	lot specific
Purification:	Affinity chromatography on Protein A
Conjugation:	Unconjugated
Storage:	Store the antibody undiluted at 2-8°C for one month or (in aliquots) at -20°C for longer. Avoid repeated freezing and thawing.
Stability:	Shelf life: one year from despatch.
Gene Name:	ATP synthase, H ⁺ transporting, mitochondrial F1 complex, O subunit
Database Link:	Entrez Gene 539 Human P48047
Background:	ATP5O is a component of the F-type ATPase found in the mitochondrial matrix. F-type ATPases are composed of a catalytic core and a membrane proton channel. This protein appears to be part of the connector linking these two components and may be involved in transmission of conformational changes or proton conductance.
Synonyms:	OSCP, ATP5O, ATPO, F1F0 ATP synthase subunit O, Complex V subunit O
Protein Pathways:	Alzheimer's disease, Huntington's disease, Metabolic pathways, Oxidative phosphorylation, Parkinson's disease



[View online »](#)

Product images:

Western blot analysis of ATP5O Antibody (N-term) in 293 cell line lysates (35ug/lane). ATP5O (arrow) was detected using the purified Pab.