

Product datasheet for **AP17894PU-N**

ATP12A (Center) Rabbit Polyclonal Antibody

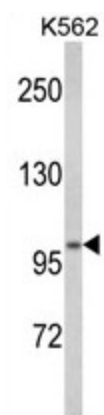
Product data:

Product Type:	Primary Antibodies
Applications:	WB
Recommended Dilution:	ELISA: 1/1,000. Western blotting: 1/100 - 1/500.
Reactivity:	Human
Host:	Rabbit
Clonality:	Polyclonal
Immunogen:	KLH conjugated synthetic peptide selected from the Center region of human ATP12A
Specificity:	This antibody reacts to ATP12A.
Formulation:	PBS with 0.09% (W/V) sodium azide State: Liquid purified Ig
Concentration:	lot specific
Purification:	Affinity chromatography on Protein A
Conjugation:	Unconjugated
Storage:	Store the antibody undiluted at 2-8°C for one month or (in aliquots) at -20°C for longer. Avoid repeated freezing and thawing.
Stability:	Shelf life: one year from despatch.
Gene Name:	ATPase H ⁺ /K ⁺ transporting non-gastric alpha2 subunit
Database Link:	Entrez Gene 479 Human P54707
Background:	ATP12A belongs to the family of P-type cation transport ATPases. This protein is a catalytic subunit of the ouabain-sensitive H ⁺ /K ⁺ -ATPase that catalyzes the hydrolysis of ATP coupled with the exchange of H ⁽⁺⁾ and K ⁽⁺⁾ ions across the plasma membrane. It is also responsible for potassium absorption in various tissues.
Synonyms:	ATP1AL1
Protein Families:	Druggable Genome, Transmembrane
Protein Pathways:	Oxidative phosphorylation



[View online »](#)

Product images:



Western blot analysis of ATP12A Antibody (Center) in K562 cell line lysates (35ug/lane). ATP12A (arrow) was detected using the purified Pab.