

Product datasheet for **AP17890PU-N**

ARSB (Center) Rabbit Polyclonal Antibody

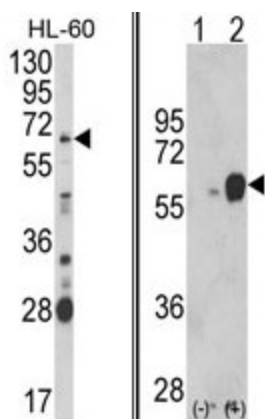
Product data:

Product Type:	Primary Antibodies
Applications:	WB
Recommended Dilution:	ELISA: 1/1,000. Western blotting: 1/100 - 1/500.
Reactivity:	Human
Host:	Rabbit
Clonality:	Polyclonal
Immunogen:	KLH conjugated synthetic peptide selected from the Center region of human ARSB
Specificity:	This antibody reacts to Arylsulfatase B.
Formulation:	PBS with 0.09% (W/V) sodium azide State: Liquid purified Ig
Concentration:	lot specific
Purification:	Affinity chromatography on Protein A
Conjugation:	Unconjugated
Storage:	Store the antibody undiluted at 2-8°C for one month or (in aliquots) at -20°C for longer. Avoid repeated freezing and thawing.
Stability:	Shelf life: one year from despatch.
Gene Name:	arylsulfatase B
Database Link:	Entrez Gene 411 Human P15848
Background:	ARSB belongs to the sulfatase family. The arylsulfatase B homodimer hydrolyzes sulfate groups of N-Acetyl-D-galactosamine, chondroitin sulfate, and dermatan sulfate. The protein is targeted to the lysosome. Mucopolysaccharidosis type VI is an autosomal recessive lysosomal storage disorder resulting from a deficiency of arylsulfatase B.
Synonyms:	ASB, ARSB, G4S
Protein Families:	Druggable Genome
Protein Pathways:	Glycosaminoglycan degradation, Lysosome, Metabolic pathways



[View online »](#)

Product images:



(LEFT) Western blot analysis of ARSB Antibody (Center) in HL-60 cell line lysates (35ug/lane). ARSB (arrow) was detected using the purified Pab. (RIGHT) Western blot analysis of ARSB (arrow) using rabbit polyclonal ARSB Antibody (Center). 293 cell lysates (2 ug/lane) either nontransfected (Lane 1) or transiently transfected with the ARSB gene (Lane 2) (Origene Technologies).