

Product datasheet for **AP17880PU-N**

ALDH3B1 Rabbit Polyclonal Antibody

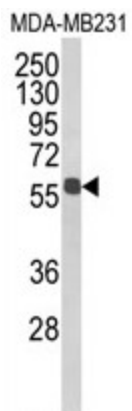
Product data:

Product Type:	Primary Antibodies
Applications:	WB
Recommended Dilution:	ELISA: 1/1,000. Western blotting: 1/100 - 1/500.
Reactivity:	Human
Host:	Rabbit
Clonality:	Polyclonal
Immunogen:	KLH conjugated synthetic peptide selected from the Center region of human ALDH3B
Specificity:	This antibody reacts to ALDH3B1 / ALDH7.
Formulation:	PBS with 0.09% (W/V) sodium azide State: Liquid purified Ig
Concentration:	lot specific
Purification:	Affinity chromatography on Protein A
Conjugation:	Unconjugated
Storage:	Store the antibody undiluted at 2-8°C for one month or (in aliquots) at -20°C for longer. Avoid repeated freezing and thawing.
Stability:	Shelf life: one year from despatch.
Gene Name:	aldehyde dehydrogenase 3 family member B1
Database Link:	Entrez Gene 221 Human P43353
Background:	The aldehyde dehydrogenases are a family of isozymes that may play a major role in the detoxification of aldehydes generated by alcohol metabolism and lipid peroxidation.
Synonyms:	Aldehyde dehydrogenase 7
Protein Families:	Druggable Genome
Protein Pathways:	Drug metabolism - cytochrome P450, Glycolysis / Gluconeogenesis, Histidine metabolism, Metabolic pathways, Metabolism of xenobiotics by cytochrome P450, Phenylalanine metabolism, Tyrosine metabolism



[View online »](#)

Product images:



Western blot analysis of ALDH3B1 Antibody (Center) in MDA-MB231 cell line lysates (35ug/lane). ALDH3B1 (arrow) was detected using the purified Pab.