

Product datasheet for **AP17866PU-N**

ACSS3 Rabbit Polyclonal Antibody

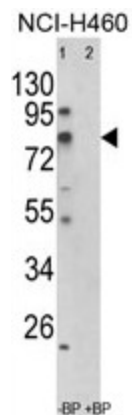
Product data:

Product Type:	Primary Antibodies
Applications:	WB
Recommended Dilution:	ELISA: 1/1,000. Western blotting: 1/100 - 1/500.
Reactivity:	Human
Host:	Rabbit
Clonality:	Polyclonal
Immunogen:	KLH conjugated synthetic peptide selected from the Center region of human ACSS3
Specificity:	This antibody reacts to ACSS3.
Formulation:	PBS with 0.09% (W/V) sodium azide State: Liquid purified Ig
Concentration:	lot specific
Purification:	Affinity chromatography on Protein A
Conjugation:	Unconjugated
Storage:	Store the antibody undiluted at 2-8°C for one month or (in aliquots) at -20°C for longer. Avoid repeated freezing and thawing.
Stability:	Shelf life: one year from despatch.
Gene Name:	acyl-CoA synthetase short-chain family member 3
Database Link:	Entrez Gene 79611 Human Q9H6R3
Background:	ACSS3 activates acetate so that it can be used for lipid synthesis or for energy generation.
Synonyms:	FLJ21963
Protein Pathways:	Metabolic pathways, Propanoate metabolism



[View online »](#)

Product images:



Western blot analysis of ACSS3 Antibody (Center) in NCI-H460 cell line lysates (35ug/lane). ACSS3 (arrow) was detected using the purified Pab. (2ug/ml)