

Product datasheet for **AP17856PU-N**

ZWINT (Center) Rabbit Polyclonal Antibody

Product data:

Product Type:	Primary Antibodies
Applications:	FC, IHC, WB
Recommended Dilution:	ELISA: 1/1000. Western blotting: 1/1000. Flow Cytometry: 1/10-1/50. Immunohistochemistry: 1/50-1/100.
Reactivity:	Human, Mouse
Host:	Rabbit
Clonality:	Polyclonal
Immunogen:	KLH conjugated synthetic peptide between 59-88 selected from the Center region of Human ZWINT
Specificity:	This antibody recognizes ZW10 interactor/ZWINT (Center).
Formulation:	PBS State: Purified State: Liquid purified Ig fraction. Preservative: 0.09% (W/V) Sodium Azide
Concentration:	lot specific
Purification:	Saturated Ammonium Sulfate (SAS) precipitation followed by dialysis against PBS.
Conjugation:	Unconjugated
Storage:	Store undiluted at 2-8°C for one month or (in aliquots) at -20°C for longer. Avoid repeated freezing and thawing.
Stability:	Shelf life: one year from despatch.
Gene Name:	ZW10 interacting kinetochore protein
Database Link:	Entrez Gene 11130 Human O95229



[View online »](#)

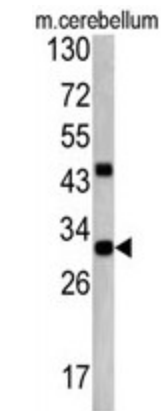
Background: ZWINT is clearly involved in kinetochore function although an exact role is not known. It interacts with ZW10, another kinetochore protein, possibly regulating the association between ZW10 and kinetochores. The protein localizes to prophase kinetochores before ZW10 does and it remains detectable on the kinetochore until late anaphase. It has a uniform distribution in the cytoplasm of interphase cells.

Synonyms: Zwint-1

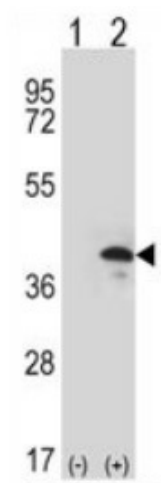
Note: **Calculated MW:** 31293 Da

Protein Families: Druggable Genome

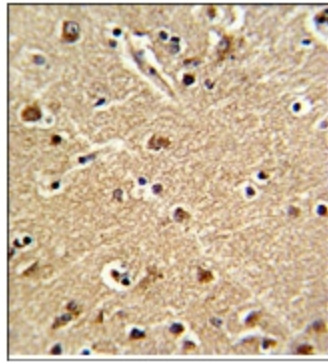
Product images:



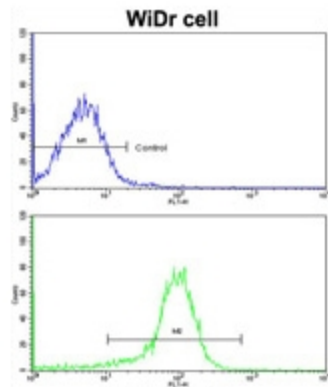
Western blot analysis: ZWINT Antibody staining of Mouse cerebellum tissue lysates (35ug/lane). ZWINT (arrow) was detected using the purified Pab.



Western blot analysis: ZWINT Antibody staining of 293 cell lysates (2 ug/lane) either nontransfected (Lane 1) or transiently transfected (Lane 2) with the ZWINT gene.



Immunohistochemistry: ZWINT Antibody staining of Formalin-Fixed, Paraffin-Embedded Human Brain Tissue. This ZWINT antibody (Center) was peroxidase-conjugated to the secondary antibody, followed by DAB staining. This data demonstrates the use of this antibody for immunohistochemistry. Clinical relevance has not been evaluated.



Flow Cytometry: Analysis of wdr cells using ZWINT Antibody (Center) (bottom histogram) compared to a Negative control cell (Top histogram). FITC-conjugated Goat-anti-Rabbit secondary antibodies were used for the analysis.