

## Product datasheet for **AP17851PU-N**

### ZBTB2 (C-term) Rabbit Polyclonal Antibody

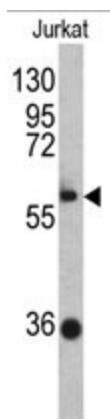
#### Product data:

Product Type:	Primary Antibodies
Applications:	WB
Recommended Dilution:	ELISA: 1/1,000. Western blotting: 1/50 - 1/100.
Reactivity:	Human
Host:	Rabbit
Clonality:	Polyclonal
Immunogen:	KLH conjugated synthetic peptide selected from the C-terminal region of human ZBTB2
Specificity:	This antibody reacts to ZBTB2.
Formulation:	PBS with 0.09% (W/V) sodium azide State: Liquid purified Ig
Concentration:	lot specific
Purification:	Saturated Ammonium Sulfate (SAS) precipitation
Conjugation:	Unconjugated
Storage:	Store the antibody undiluted at 2-8°C for one month or (in aliquots) at -20°C for longer. Avoid repeated freezing and thawing.
Stability:	Shelf life: one year from despatch.
Gene Name:	zinc finger and BTB domain containing 2
Database Link:	<a href="#">Entrez Gene 57621 Human Q8N680</a>
Background:	ZBTB2 may be involved in transcriptional regulation.
Synonyms:	KIAA1483, ZNF437
Protein Families:	Transcription Factors



[View online »](#)

## Product images:



Western blot analysis of ZBTB2 antibody (C-term) in Jurkat cell line lysates (35ug/lane). ZBTB2 (arrow) was detected using the purified Pab.