

## Product datasheet for **AP17842PU-N**

### Exportin T (XPOT) (C-term) Rabbit Polyclonal Antibody

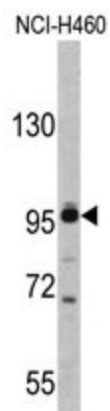
#### Product data:

Product Type:	Primary Antibodies
Applications:	WB
Recommended Dilution:	ELISA: 1/1,000. Western blotting: 1/50 - 1/100.
Reactivity:	Human
Host:	Rabbit
Clonality:	Polyclonal
Immunogen:	KLH conjugated synthetic peptide selected from the C-terminal region of human XPOT
Specificity:	This antibody reacts to Exportin-T.
Formulation:	PBS with 0.09% (W/V) sodium azide State: Liquid purified Ig
Concentration:	lot specific
Purification:	Saturated Ammonium Sulfate (SAS) precipitation
Conjugation:	Unconjugated
Storage:	Store the antibody undiluted at 2-8°C for one month or (in aliquots) at -20°C for longer. Avoid repeated freezing and thawing.
Stability:	Shelf life: one year from despatch.
Gene Name:	exportin for tRNA
Database Link:	<a href="#">Entrez Gene 11260 Human O43592</a>
Background:	XPOT is a protein belonging to the RAN-GTPase exportin family that mediates export of tRNA from the nucleus to the cytoplasm. Translocation of tRNA to the cytoplasm occurs once exportin has bound both tRNA and GTP-bound RAN.
Synonyms:	Exportin(tRNA), tRNA exportin
Protein Families:	Druggable Genome



[View online »](#)

## Product images:



Western blot analysis of XPOT antibody (C-term) in NCI-H460 cell line lysates (35ug/lane). XPOT (arrow) was detected using the purified Pab.