

## Product datasheet for **AP17839PU-N**

### CRM1 (XPO1) (C-term) Rabbit Polyclonal Antibody

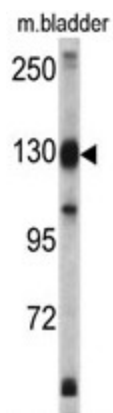
#### Product data:

Product Type:	Primary Antibodies
Applications:	WB
Recommended Dilution:	ELISA: 1/1,000. Western blotting: 1/50 - 1/100.
Reactivity:	Human, Mouse
Host:	Rabbit
Clonality:	Polyclonal
Immunogen:	KLH conjugated synthetic peptide selected from the C-terminal region of human XPO1
Specificity:	This antibody reacts to Exportin-1.
Formulation:	PBS with 0.09% (W/V) sodium azide State: Liquid purified Ig
Concentration:	lot specific
Purification:	Saturated Ammonium Sulfate (SAS) precipitation
Conjugation:	Unconjugated
Storage:	Store the antibody undiluted at 2-8°C for one month or (in aliquots) at -20°C for longer. Avoid repeated freezing and thawing.
Stability:	Shelf life: one year from despatch.
Gene Name:	Homo sapiens exportin 1 (XPO1)
Database Link:	<a href="#">Entrez Gene 103573 Mouse</a> <a href="#">Entrez Gene 7514 Human</a> <a href="#">O14980</a>
Background:	XPO1 mediates leucine-rich nuclear export signal (NES)-dependent protein transport. Exportin 1 specifically inhibits the nuclear export of Rev and U snRNAs. It is involved in the control of several cellular processes by controlling the localization of cyclin B, MPAK, and MAPKAP kinase 2. This protein also regulates NFAT and AP-1.
Synonyms:	Exp1, CRM1
Protein Families:	Druggable Genome



[View online »](#)

## Product images:



Western blot analysis of XPO1 antibody (C-term) in mouse bladder tissue lysates (35ug/lane). XPO1 (arrow) was detected using the purified Pab.