

Product datasheet for **AP17838PU-N**

FAM123B (AMER1) (Center) Rabbit Polyclonal Antibody

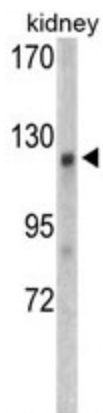
Product data:

Product Type:	Primary Antibodies
Applications:	IHC, WB
Recommended Dilution:	ELISA: 1/1,000. Western blotting: 1/50 - 1/100. IHC: 1:50-1:100 (IHC analysis in formalin fixed and paraffin embedded mouse brain tissue)
Reactivity:	Human, Mouse
Host:	Rabbit
Clonality:	Polyclonal
Immunogen:	KLH conjugated synthetic peptide selected from the Center region of human WTX
Specificity:	This antibody reacts to WTX.
Formulation:	PBS with 0.09% (W/V) sodium azide State: Liquid purified Ig
Concentration:	lot specific
Purification:	Saturated Ammonium Sulfate (SAS) precipitation
Conjugation:	Unconjugated
Storage:	Store the antibody undiluted at 2-8°C for one month or (in aliquots) at -20°C for longer. Avoid repeated freezing and thawing.
Stability:	Shelf life: one year from despatch.
Gene Name:	Homo sapiens APC membrane recruitment protein 1 (AMER1)
Database Link:	Entrez Gene 139285 Human Q5JTC6
Background:	WTX is involved in kidney development.
Synonyms:	FAM123B, WTX, Wilms tumor gene on the X chromosome protein



[View online »](#)

Product images:



Western blot analysis of WTX antibody (Center) in mouse kidney tissue lysates (35ug/lane). WTX (arrow) was detected using the purified Pab.