

## Product datasheet for **AP17836PU-N**

### WSB2 (C-term) Rabbit Polyclonal Antibody

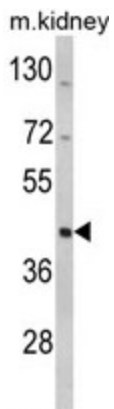
#### Product data:

Product Type:	Primary Antibodies
Applications:	WB
Recommended Dilution:	WB, E
Reactivity:	Human, Mouse
Host:	Rabbit
Clonality:	Polyclonal
Immunogen:	KLH conjugated synthetic peptide selected from the C-terminal region of human WSB2
Specificity:	This antibody reacts to WSB2.
Formulation:	PBS with 0.09% (W/V) sodium azide State: Liquid purified Ig
Concentration:	lot specific
Purification:	Saturated Ammonium Sulfate (SAS) precipitation
Conjugation:	Unconjugated
Storage:	Store the antibody undiluted at 2-8°C for one month or (in aliquots) at -20°C for longer. Avoid repeated freezing and thawing.
Stability:	Shelf life: one year from despatch.
Gene Name:	WD repeat and SOCS box containing 2
Database Link:	<a href="#">Entrez Gene 55884 Human Q9NYS7</a>
Background:	WSB2 is a member of the WD-protein subfamily. This protein contains five WD-repeats spanning most of the protein and an SOCS box in the C-terminus. The SOCS box may act as a bridge between specific substrate-binding domains and E3 ubiquitin protein ligases.
Synonyms:	MGC10210; SBA2; WSB-2
Protein Families:	Druggable Genome



[View online »](#)

## Product images:



Western blot analysis of WSB2 Antibody (C-term) in mouse kidney tissue lysates (35ug/lane). WSB2 (arrow) was detected using the purified Pab.