

## Product datasheet for **AP17833PU-N**

### WNT1 (C-term) Rabbit Polyclonal Antibody

#### Product data:

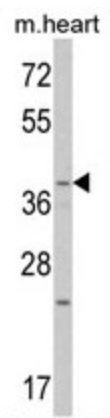
Product Type:	Primary Antibodies
Applications:	WB
Recommended Dilution:	ELISA: 1/1,000. Western blotting: 1/50 - 1/100.
Reactivity:	Human, Mouse
Host:	Rabbit
Clonality:	Polyclonal
Immunogen:	KLH conjugated synthetic peptide selected from the C-terminal region of human WNT1
Specificity:	This antibody reacts to WNT1.
Formulation:	PBS with 0.09% (W/V) sodium azide State: Liquid purified Ig
Concentration:	lot specific
Purification:	Saturated Ammonium Sulfate (SAS) precipitation
Conjugation:	Unconjugated
Storage:	Store the antibody undiluted at 2-8°C for one month or (in aliquots) at -20°C for longer. Avoid repeated freezing and thawing.
Stability:	Shelf life: one year from despatch.
Gene Name:	Wnt family member 1
Database Link:	<a href="#">Entrez Gene 22408 Mouse</a> <a href="#">Entrez Gene 7471 Human</a> <a href="#">P04628</a>
Background:	WNT1 is known to be 98% identical to the mouse Wnt1 protein at the amino acid level. The studies in mouse indicate that the Wnt1 protein functions in the induction of the mesencephalon and cerebellum.
Synonyms:	Proto-oncogene protein Wnt-1, INT1, INT-1
Protein Families:	Adult stem cells, Cancer stem cells, Druggable Genome, ES Cell Differentiation/IPS, Secreted Protein, Stem cell relevant signaling - Wnt Signaling pathway, Transmembrane



[View online »](#)

**Protein Pathways:** Basal cell carcinoma, Hedgehog signaling pathway, Melanogenesis, Pathways in cancer, Wnt signaling pathway

**Product images:**



Western blot analysis of WNT1 Antibody (C-term) in mouse heart tissue lysates (35ug/lane). WNT1 (arrow) was detected using the purified Pab.