

Product datasheet for **AP17831PU-N**

WDR1 (C-term) Rabbit Polyclonal Antibody

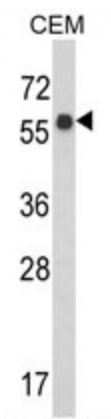
Product data:

Product Type:	Primary Antibodies
Applications:	WB
Recommended Dilution:	ELISA: 1/1,000. Western blotting: 1/50 - 1/100.
Reactivity:	Human
Host:	Rabbit
Clonality:	Polyclonal
Immunogen:	KLH conjugated synthetic peptide selected from the C-terminal region of human WDR1
Specificity:	This antibody reacts to WDR1.
Formulation:	PBS with 0.09% (W/V) sodium azide State: Liquid purified Ig
Concentration:	lot specific
Purification:	Saturated Ammonium Sulfate (SAS) precipitation
Conjugation:	Unconjugated
Storage:	Store the antibody undiluted at 2-8°C for one month or (in aliquots) at -20°C for longer. Avoid repeated freezing and thawing.
Stability:	Shelf life: one year from despatch.
Gene Name:	WD repeat domain 1
Database Link:	Entrez Gene 9948 Human O75083
Background:	WDR1 is a protein containing 9 WD repeats. WD repeats are approximately 30- to 40-amino acid domains containing several conserved residues, mostly including a trp-asn at the C-terminal end. WD domains are involved in protein-protein interactions. This protein may help induce the disassembly of actin filaments.
Synonyms:	AIP1; NORI-1



[View online »](#)

Product images:



Western blot analysis of WDR1 Antibody (C-term) in CEM cell line lysates (35ug/lane).WDR1 (arrow) was detected using the purified Pab.