

## Product datasheet for **AP17828PU-N**

### Villin (VIL1) (N-term) Rabbit Polyclonal Antibody

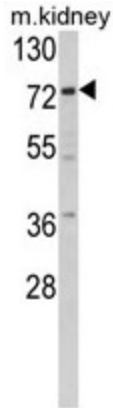
#### Product data:

Product Type:	Primary Antibodies
Applications:	FC, IHC, WB
Recommended Dilution:	<b>ELISA:</b> 1/1,000. <b>Western blotting:</b> 1/1,000. <b>Flow Cytometry:</b> 1/10-1/50. <b>Immunohistochemistry on Paraffin Sections:</b> 1/50-1/100.
Reactivity:	Human, Mouse
Host:	Rabbit
Clonality:	Polyclonal
Immunogen:	KLH conjugated synthetic peptide between 180-207 amino acids from the N-terminal region of Human Villin-1.
Specificity:	This antibody recognizes Villin-1.
Formulation:	PBS State: Liquid purified Ig fraction Preservative: 0.09% (W/V) Sodium Azide
Concentration:	lot specific
Purification:	Purified through a protein A column, followed by peptide affinity purification.
Conjugation:	Unconjugated
Storage:	Store undiluted at 2-8°C for one month or (in aliquots) at -20°C for longer. Avoid repeated freezing and thawing.
Stability:	Shelf life: one year from despatch.
Gene Name:	villin 1
Database Link:	<a href="#">Entrez Gene 22349 Mouse</a> <a href="#">Entrez Gene 7429 Human</a> <a href="#">P09327</a>
Background:	Villin-1 is a member of a family of calcium-regulated actin-binding proteins. This protein represents a dominant part of the brush border cytoskeleton which functions in the capping, severing, and bundling of actin filaments.
Synonyms:	VIL1



[View online »](#)

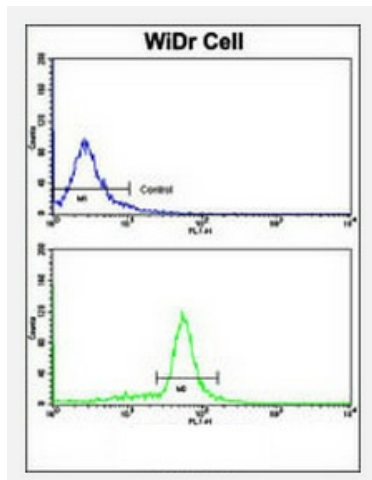
Product images:



Western blot analysis of Villin-1 Antibody (N-term) in mouse kidney tissue lysates (35ug/lane). VIL1 (arrow) was detected using the purified Pab.



Formalin-fixed and paraffin-embedded human colon carcinoma reacted with Villin-1 Antibody (N-term), which was peroxidase-conjugated to the secondary antibody, followed by DAB staining.



Flow Cytometric analysis of WiDr cells using Villin-1 Antibody (N-term) (bottom histogram) compared to a negative control cell (top histogram). FITC-conjugated goat-anti-rabbit secondary antibodies were used for the analysis.