

## Product datasheet for **AP17818PU-N**

### UBE2C (N-term) Rabbit Polyclonal Antibody

#### Product data:

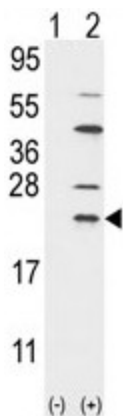
Product Type:	Primary Antibodies
Applications:	WB
Recommended Dilution:	ELISA: 1/1,000. Western blotting: 1/50 - 1/100.
Reactivity:	Human
Host:	Rabbit
Clonality:	Polyclonal
Immunogen:	KLH conjugated synthetic peptide selected from the N-terminal region of human UBE2C
Specificity:	This antibody reacts to UBE2C / UBCH10.
Formulation:	PBS with 0.09% (W/V) sodium azide State: Liquid purified Ig
Concentration:	lot specific
Purification:	Saturated Ammonium Sulfate (SAS) precipitation
Conjugation:	Unconjugated
Storage:	Store the antibody undiluted at 2-8°C for one month or (in aliquots) at -20°C for longer. Avoid repeated freezing and thawing.
Stability:	Shelf life: one year from despatch.
Gene Name:	ubiquitin conjugating enzyme E2 C
Database Link:	<a href="#">Entrez Gene 11065 Human</a> <a href="#">O00762</a>
Background:	The modification of proteins with ubiquitin is an important cellular mechanism for targeting abnormal or short-lived proteins for degradation. Ubiquitination involves at least three classes of enzymes: ubiquitin-activating enzymes, or E1s, ubiquitin-conjugating enzymes, or E2s, and ubiquitin-protein ligases, or E3s. UBE2C is a member of the E2 ubiquitin-conjugating enzyme family. This enzyme is required for the destruction of mitotic cyclins and for cell cycle progression.
Synonyms:	Ubiquitin-conjugating enzyme E2 C, Ubiquitin-protein ligase C, Ubiquitin carrier protein C
Protein Families:	Druggable Genome



[View online »](#)

Protein Pathways: Ubiquitin mediated proteolysis

### Product images:



Western blot analysis of UBE2C (arrow) using rabbit polyclonal UBE2C Antibody (N-term G25). 293 cell lysates (2 ug/lane) either nontransfected (Lane 1) or transiently transfected with the UBE2C gene (Lane 2) (Origene Technologies). (8ug/ml)