

## Product datasheet for **AP17813PU-N**

### TUFM (N-term) Rabbit Polyclonal Antibody

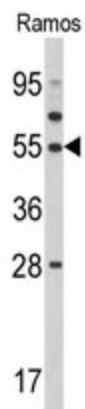
#### Product data:

Product Type:	Primary Antibodies
Applications:	WB
Recommended Dilution:	ELISA: 1/1,000. Western blotting: 1/50 - 1/100.
Reactivity:	Human
Host:	Rabbit
Clonality:	Polyclonal
Immunogen:	KLH conjugated synthetic peptide selected from the N-terminal region of human TUFM
Specificity:	This antibody reacts to TUFM.
Formulation:	PBS with 0.09% (W/V) sodium azide State: Liquid purified Ig
Concentration:	lot specific
Purification:	Saturated Ammonium Sulfate (SAS) precipitation
Conjugation:	Unconjugated
Storage:	Store the antibody undiluted at 2-8°C for one month or (in aliquots) at -20°C for longer. Avoid repeated freezing and thawing.
Stability:	Shelf life: one year from despatch.
Gene Name:	Tu translation elongation factor, mitochondrial
Database Link:	<a href="#">Entrez Gene 7284 Human P49411</a>
Background:	TUFM is a protein which participates in protein translation in mitochondria. This protein promotes the GTP-dependent binding of aminoacyl-tRNA to the A-site of ribosomes during protein biosynthesis.
Synonyms:	EF-Tu, Elongation factor Tu mitochondrial



[View online »](#)

## Product images:



Western blot analysis of TUFM Antibody (N-term) in Ramos cell line lysates (35ug/lane). TUFM (arrow) was detected using the purified Pab.