

Product datasheet for **AP17806PU-N**

CD40L (CD40LG) (N-term) Rabbit Polyclonal Antibody

Product data:

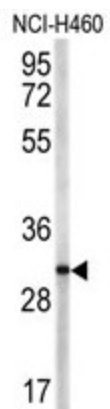
Product Type:	Primary Antibodies
Applications:	WB
Recommended Dilution:	ELISA: 1/1,000. Western blotting: 1/50.
Reactivity:	Human
Host:	Rabbit
Clonality:	Polyclonal
Immunogen:	KLH conjugated synthetic peptide selected from the N-terminal region of human TRAP
Specificity:	This antibody reacts to CD154 / CD40L.
Formulation:	PBS with 0.09% (W/V) sodium azide State: Liquid purified Ig
Concentration:	lot specific
Purification:	Saturated Ammonium Sulfate (SAS) precipitation
Conjugation:	Unconjugated
Storage:	Store the antibody undiluted at 2-8°C for one month or (in aliquots) at -20°C for longer. Avoid repeated freezing and thawing.
Stability:	Shelf life: one year from despatch.
Gene Name:	CD40 ligand
Database Link:	Entrez Gene 959 Human P29965
Background:	TRAP is expressed on the surface of T cells. It regulates B cell function by engaging CD40 on the B cell surface. A defect in its gene results in an inability to undergo immunoglobulin class switch and is associated with hyper-IgM syndrome.
Synonyms:	CD40 ligand, CD40-L, CD40LG, TNFSF5, TRAP, GP39
Protein Families:	Druggable Genome, Secreted Protein, Transmembrane



[View online »](#)

Protein Pathways:

Allograft rejection, Asthma, Autoimmune thyroid disease, Cell adhesion molecules (CAMs), Cytokine-cytokine receptor interaction, Primary immunodeficiency, Systemic lupus erythematosus, T cell receptor signaling pathway, Viral myocarditis

Product images:

Western blot analysis of TRified Pab.