

Product datasheet for **AP17804PU-N**

Triosephosphate isomerase (TPI1) (N-term) Rabbit Polyclonal Antibody

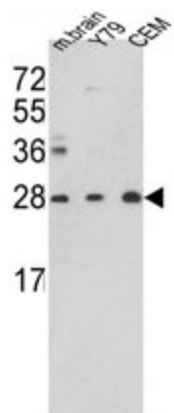
Product data:

Product Type:	Primary Antibodies
Applications:	WB
Recommended Dilution:	ELISA: 1/1,000. Western blotting: 1/50 - 1/100.
Reactivity:	Human, Mouse
Host:	Rabbit
Clonality:	Polyclonal
Immunogen:	KLH conjugated synthetic peptide selected from the N-terminal region of human TPI1
Specificity:	This antibody reacts to Triosephosphate isomerase (TPI1).
Formulation:	PBS with 0.09% (W/V) sodium azide State: Liquid purified Ig
Concentration:	lot specific
Purification:	Saturated Ammonium Sulfate (SAS) precipitation
Conjugation:	Unconjugated
Storage:	Store the antibody undiluted at 2-8°C for one month or (in aliquots) at -20°C for longer. Avoid repeated freezing and thawing.
Stability:	Shelf life: one year from despatch.
Gene Name:	triosephosphate isomerase 1
Database Link:	Entrez Gene 21991 Mouse Entrez Gene 7167 Human P60174
Background:	TPI1 is an enzyme, consisting of two identical proteins, which catalyzes the isomerization of glyceraldehydes 3-phosphate (G3P) and dihydroxy-acetone phosphate (DHAP) in glycolysis and gluconeogenesis.
Synonyms:	Triose-phosphate isomerase, TPI, TIM
Protein Pathways:	Fructose and mannose metabolism, Glycolysis / Gluconeogenesis, Inositol phosphate metabolism, Metabolic pathways



[View online »](#)

Product images:



Western blot analysis of TPI1 Antibody (N-term) in Y79, CEM cell line and mouse brain tissue lysates (35ug/lane). TPI1 (arrow) was detected using the purified Pab. (2ug/ml)