

## Product datasheet for **AP17802PU-N**

### Tryptophan Hydroxylase (TPH1) (N-term) Rabbit Polyclonal Antibody

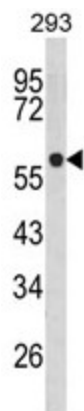
#### Product data:

Product Type:	Primary Antibodies
Applications:	WB
Recommended Dilution:	ELISA: 1/1,000. Western blotting: 1/100 - 1/500.
Reactivity:	Human
Host:	Rabbit
Clonality:	Polyclonal
Immunogen:	KLH conjugated synthetic peptide selected from the N-terminal region of human TPH1
Specificity:	This antibody reacts to Tryptophan 5-hydroxylase 1 (TPH1).
Formulation:	PBS with 0.09% (W/V) sodium azide State: Liquid purified Ig
Concentration:	lot specific
Purification:	Affinity chromatography on Protein A
Conjugation:	Unconjugated
Storage:	Store the antibody undiluted at 2-8°C for one month or (in aliquots) at -20°C for longer. Avoid repeated freezing and thawing.
Stability:	Shelf life: one year from despatch.
Gene Name:	tryptophan hydroxylase 1
Database Link:	<a href="#">Entrez Gene 7166 Human P17752</a>
Background:	TPH1 is a member of the aromatic amino acid hydroxylase family. This protein catalyzes the first and rate limiting step in the biosynthesis of serotonin, an important hormone and neurotransmitter.
Synonyms:	Tryptophan 5-monoxygenase 1, TPRH, TRPH
Protein Families:	Druggable Genome
Protein Pathways:	Metabolic pathways, Tryptophan metabolism



[View online »](#)

## Product images:



Western blot analysis of TPH1 Antibody (N-term) in 293 cell line lysates (35ug/lane). TPH1 (arrow) was detected using the purified Pab.