

Product datasheet for **AP17801PU-N**

PLAT (Center) Rabbit Polyclonal Antibody

Product data:

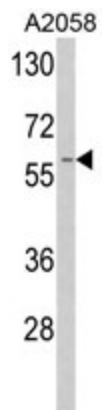
Product Type:	Primary Antibodies
Applications:	WB
Recommended Dilution:	ELISA: 1/1,000. Western blotting: 1/50 - 1/100.
Reactivity:	Human
Host:	Rabbit
Clonality:	Polyclonal
Immunogen:	KLH conjugated synthetic peptide selected from the Center region of human TPA
Specificity:	This antibody reacts to t-PA / PLAT.
Formulation:	PBS with 0.09% (W/V) sodium azide State: Liquid purified Ig
Concentration:	lot specific
Purification:	Saturated Ammonium Sulfate (SAS) precipitation
Conjugation:	Unconjugated
Storage:	Store the antibody undiluted at 2-8°C for one month or (in aliquots) at -20°C for longer. Avoid repeated freezing and thawing.
Stability:	Shelf life: one year from despatch.
Gene Name:	plasminogen activator, tissue type
Database Link:	Entrez Gene 5327 Human P00750
Background:	TPA is a tissue-type plasminogen activator, a secreted serine protease which converts the proenzyme plasminogen to plasmin, a fibrinolytic enzyme. Tissue-type plasminogen activator is synthesized as a single chain which is cleaved by plasmin to a two chain disulfide linked protein. This enzyme plays a role in cell migration and tissue remodeling. Increased enzymatic activity causes hyperfibrinolysis, which manifests as excessive bleeding; decreased activity leads to hypofibrinolysis which can result in thrombosis or embolism.
Synonyms:	tPA, Tissue-type plasminogen activator, Alteplase, Reteplase
Protein Families:	Druggable Genome, Protease, Secreted Protein



[View online »](#)

Protein Pathways: Complement and coagulation cascades

Product images:



Western blot analysis of TPA Antibody (Center) in A2058 cell line lysates (35ug/lane). TPA (arrow) was detected using the purified Pab.