

Product datasheet for **AP17798PU-N**

TOMM70A (TOMM70) (C-term) Rabbit Polyclonal Antibody

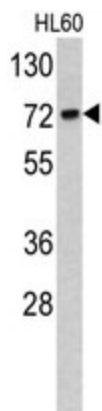
Product data:

Product Type:	Primary Antibodies
Applications:	WB
Recommended Dilution:	ELISA: 1/1,000. Western blotting: 1/50 - 1/100.
Reactivity:	Human
Host:	Rabbit
Clonality:	Polyclonal
Immunogen:	KLH conjugated synthetic peptide selected from the C-terminal region of human TOMM70A
Specificity:	This antibody reacts to TOMM70A.
Formulation:	PBS with 0.09% (W/V) sodium azide State: Liquid purified Ig
Concentration:	lot specific
Purification:	Saturated Ammonium Sulfate (SAS) precipitation
Conjugation:	Unconjugated
Storage:	Store the antibody undiluted at 2-8°C for one month or (in aliquots) at -20°C for longer. Avoid repeated freezing and thawing.
Stability:	Shelf life: one year from despatch.
Gene Name:	translocase of outer mitochondrial membrane 70
Database Link:	Entrez Gene 9868 Human O94826
Background:	The translocase of outer mitochondrial membrane (TOM) complex is a multisubunit complex involved in the recognition, unfolding, and translocation of preproteins into the mitochondria.
Synonyms:	TOM70, KIAA0719
Protein Families:	Transmembrane



[View online »](#)

Product images:



Western blot analysis of TOMM70A antibody (C-term) in HL60 cell line lysates (35ug/lane). TOMM70A (arrow) was detected using the purified Pab.