

Product datasheet for **AP17792PU-N**

TMPRSS2 (Center) Rabbit Polyclonal Antibody

Product data:

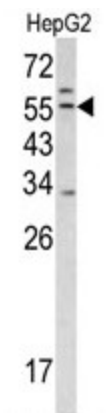
Product Type:	Primary Antibodies
Applications:	WB
Recommended Dilution:	ELISA: 1/1,000. Western blotting: 1/50 - 1/100.
Reactivity:	Human
Host:	Rabbit
Clonality:	Polyclonal
Immunogen:	KLH conjugated synthetic peptide selected from the Center region of human TMPRSS2
Specificity:	This antibody reacts to TMPRSS2.
Formulation:	PBS with 0.09% (W/V) sodium azide State: Liquid purified Ig
Concentration:	lot specific
Purification:	Saturated Ammonium Sulfate (SAS) precipitation
Conjugation:	Unconjugated
Storage:	Store the antibody undiluted at 2-8°C for one month or (in aliquots) at -20°C for longer. Avoid repeated freezing and thawing.
Stability:	Shelf life: one year from despatch.
Gene Name:	Homo sapiens transmembrane protease, serine 2 (TMPRSS2), transcript variant 2
Database Link:	Entrez Gene 7113 Human O15393
Background:	TMPRSS2 is a protein that belongs to the serine protease family. The protein contains a type II transmembrane domain, a receptor class A domain, a scavenger receptor cysteine-rich domain and a protease domain. Serine proteases are known to be involved in many physiological and pathological processes. Its gene was demonstrated to be up-regulated by androgenic hormones in prostate cancer cells and down-regulated in androgen-independent prostate cancer tissue. The protease domain of this protein is thought to be cleaved and secreted into cell media after autocleavage.
Synonyms:	Transmembrane protease serine 2, PRSS10, Serine protease 10



[View online »](#)

Protein Families: Druggable Genome, Protease, Secreted Protein, Transmembrane

Product images:



Western blot analysis of TMPRSS2 antibody (Center) in HepG2 cell line lysates (35ug/lane). TMPRSS2 (arrow) was detected using the purified Pab.