

Product datasheet for **AP17789PU-N**

TIMP1 (N-term) Rabbit Polyclonal Antibody

Product data:

Product Type:	Primary Antibodies
Applications:	FC, IF, IHC, WB
Recommended Dilution:	Western blotting: 1/1,000. Immunofluorescence: 1/10-1/50. Immunohistochemistry on Paraffin Sections: 1/10-1/50. Flow Cytometry: 1/10 - 1/50.
Reactivity:	Human
Host:	Rabbit
Clonality:	Polyclonal
Immunogen:	KLH conjugated synthetic peptide between 41-70 amino acids from the N-terminal region of Human TIMP1.
Specificity:	This antibody recognizes Human TIMP1. Other species not tested.
Formulation:	PBS State: Liquid purified Ig fraction Preservative: 0.09% (W/V) Sodium Azide
Concentration:	lot specific
Purification:	Saturated Ammonium Sulfate (SAS) precipitation
Conjugation:	Unconjugated
Storage:	Store undiluted at 2-8°C for one month or (in aliquots) at -20°C for longer. Avoid repeated freezing and thawing.
Stability:	Shelf life: one year from despatch.
Gene Name:	TIMP metalloproteinase inhibitor 1
Database Link:	Entrez Gene 7076 Human P01033



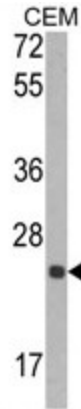
[View online »](#)

Background:

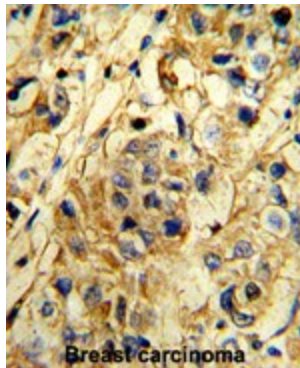
TIMP1 belongs to the TIMP family. The proteins in this family are natural inhibitors of the matrix metalloproteinases (MMPs), a group of peptidases involved in degradation of the extracellular matrix. In addition to its inhibitory role against most of the known MMPs, the protein is able to promote cell proliferation in a wide range of cell types, and may also have an anti-apoptotic function.

Synonyms:

TIMP-1, TIMP, Tissue inhibitor of metalloproteinases, Metalloproteinase inhibitor 1, EPA, CLGI

Product images:


Western blot analysis of TIMP1 Antibody (N-term) in CEM cell line lysates (35ug/lane). TIMP1 (arrow) was detected using the purified Pab.



Formalin-fixed and paraffin-embedded human breast carcinoma reacted with TIMP1 Antibody (N-term), which was peroxidase-conjugated to the secondary antibody, followed by DAB staining. This data demonstrates the use of this antibody for immunohistochemistry; clinical relevance has not been evaluated.