

## Product datasheet for **AP17785PU-N**

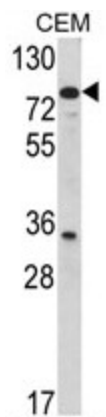
### Transglutaminase 4 (TGM4) (Center) Rabbit Polyclonal Antibody

#### Product data:

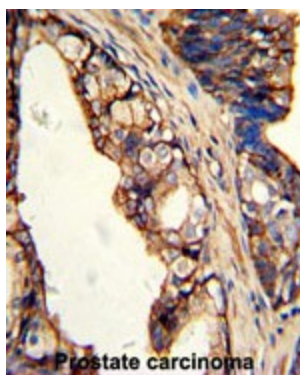
Product Type:	Primary Antibodies
Applications:	IHC, WB
Recommended Dilution:	ELISA: 1/1,000. Western blotting: 1/100 - 1/500. Immunohistochemistry on paraffin sections: 1/50 - 1/100.
Reactivity:	Human
Host:	Rabbit
Clonality:	Polyclonal
Immunogen:	KLH conjugated synthetic peptide selected from the Center region of human TGM4
Specificity:	This antibody reacts to Transglutaminase-4 (TGM4).
Formulation:	PBS with 0.09% (W/V) sodium azide State: Liquid purified Ig
Concentration:	lot specific
Purification:	Affinity chromatography on Protein A
Conjugation:	Unconjugated
Storage:	Store the antibody undiluted at 2-8°C for one month or (in aliquots) at -20°C for longer. Avoid repeated freezing and thawing.
Stability:	Shelf life: one year from despatch.
Gene Name:	transglutaminase 4
Database Link:	<a href="#">Entrez Gene 7047 Human P49221</a>
Background:	TGM4 is associated with the mammalian reproductive process and catalyzes the cross-linking of proteins and the conjugation of polyamines to specific proteins in the seminal tract.
Synonyms:	TGase-4, TGP, Fibrinolygase, Prostate transglutaminase
Protein Families:	Druggable Genome



[View online »](#)

**Product images:**

Western blot analysis of TGM4 Antibody (Center) in CEM cell line lysates (35ug/lane). TGM4 (arrow) was detected using the purified Pab.



Formalin-fixed and paraffin-embedded human prostate carcinoma with TGM4 Antibody (Center), which was peroxidase-conjugated to the secondary antibody, followed by DAB staining.