

Product datasheet for **AP17783PU-N**

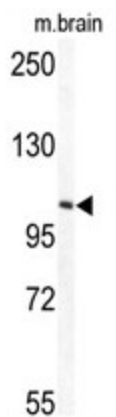
TECPR1 (C-term) Rabbit Polyclonal Antibody

Product data:

Product Type:	Primary Antibodies
Applications:	WB
Recommended Dilution:	ELISA: 1/1,000. Western blotting: 1/50 - 1/100.
Reactivity:	Human
Host:	Rabbit
Clonality:	Polyclonal
Immunogen:	KLH conjugated synthetic peptide selected from the C-terminal region of human TECPR1
Specificity:	This antibody reacts to TECPR1.
Formulation:	PBS with 0.09% (W/V) sodium azide State: Liquid purified Ig
Concentration:	lot specific
Purification:	Saturated Ammonium Sulfate (SAS) precipitation
Conjugation:	Unconjugated
Storage:	Store the antibody undiluted at 2-8°C for one month or (in aliquots) at -20°C for longer. Avoid repeated freezing and thawing.
Stability:	Shelf life: one year from despatch.
Gene Name:	tectonin beta-propeller repeat containing 1
Database Link:	Entrez Gene 25851 Human Q7Z6L1
Synonyms:	KIAA1358

[View online »](#)

Product images:



Western blot analysis of TECPR1 Antibody (C-term) in mouse brain tissue lysates (35ug/lane). TECPR1 (arrow) was detected using the purified Pab.