

Product datasheet for **AP17775PU-N**

Transaldolase 1 (TALDO1) (Center) Rabbit Polyclonal Antibody

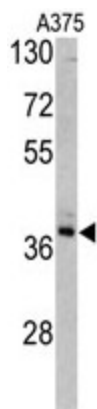
Product data:

Product Type:	Primary Antibodies
Applications:	WB
Recommended Dilution:	ELISA: 1/1,000. Western blotting: 1/50 - 1/100.
Reactivity:	Human
Host:	Rabbit
Clonality:	Polyclonal
Immunogen:	KLH conjugated synthetic peptide selected from the Center region of human TALDO1
Specificity:	This antibody reacts to Transaldolase (TALDO1).
Formulation:	PBS with 0.09% (W/V) sodium azide State: Liquid purified Ig
Concentration:	lot specific
Purification:	Saturated Ammonium Sulfate (SAS) precipitation
Conjugation:	Unconjugated
Storage:	Store the antibody undiluted at 2-8°C for one month or (in aliquots) at -20°C for longer. Avoid repeated freezing and thawing.
Stability:	Shelf life: one year from despatch.
Gene Name:	transaldolase 1
Database Link:	Entrez Gene 6888 Human P37837
Background:	Transaldolase 1 is a key enzyme of the nonoxidative pentose phosphate pathway providing ribose-5-phosphate for nucleic acid synthesis and NADPH for lipid biosynthesis. This pathway can also maintain glutathione at a reduced state and thus protect sulfhydryl groups and cellular integrity from oxygen radicals.
Synonyms:	TAL, TALDO, TALDOR
Protein Families:	Druggable Genome
Protein Pathways:	Metabolic pathways, Pentose phosphate pathway



[View online »](#)

Product images:



Western blot analysis of TALDO1 antibody (Center) in A375 cell line lysates (35ug/lane). TALDO1 (arrow) was detected using the purified Pab.