

## Product datasheet for **AP17773PU-N**

### SM22 alpha (TAGLN) (C-term) Rabbit Polyclonal Antibody

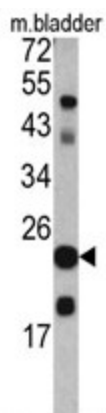
#### Product data:

Product Type:	Primary Antibodies
Applications:	WB
Recommended Dilution:	ELISA: 1/1,000. Western blotting: 1/50 - 1/100.
Reactivity:	Human, Mouse
Host:	Rabbit
Clonality:	Polyclonal
Immunogen:	KLH conjugated synthetic peptide selected from the C-terminal region of human TAGLN
Specificity:	This antibody reacts to Transgelin (TAGLN).
Formulation:	PBS with 0.09% (W/V) sodium azide State: Liquid purified Ig
Concentration:	lot specific
Purification:	Saturated Ammonium Sulfate (SAS) precipitation
Conjugation:	Unconjugated
Storage:	Store the antibody undiluted at 2-8°C for one month or (in aliquots) at -20°C for longer. Avoid repeated freezing and thawing.
Stability:	Shelf life: one year from despatch.
Gene Name:	transgelin
Database Link:	<a href="#">Entrez Gene 21345 Mouse</a> <a href="#">Entrez Gene 6876 Human</a> <a href="#">Q01995</a>
Background:	TAGLN is a transformation and shape-change sensitive actin cross-linking/gelling protein found in fibroblasts and smooth muscle. Its expression is down-regulated in many cell lines, and this down-regulation may be an early and sensitive marker for the onset of transformation. A functional role of this protein is unclear.
Synonyms:	SM22, WS3-10



[View online »](#)

## Product images:



Western blot analysis of TAGLN antibody (C-term) in mouse bladder tissue lysates (35ug/lane). TAGLN (arrow) was detected using the purified Pab.