

Product datasheet for **AP17772PU-N**

KMT5C (Center) Rabbit Polyclonal Antibody

Product data:

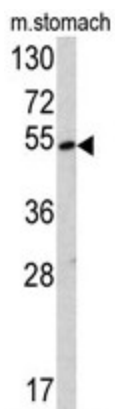
Product Type:	Primary Antibodies
Applications:	WB
Recommended Dilution:	ELISA: 1/1,000. Western blotting: 1/50 - 1/100.
Reactivity:	Human, Mouse
Host:	Rabbit
Clonality:	Polyclonal
Immunogen:	KLH conjugated synthetic peptide selected from the Center region of human SUV420H2
Specificity:	This antibody reacts to SUV4-20H2.
Formulation:	PBS with 0.09% (W/V) sodium azide State: Liquid purified Ig
Concentration:	lot specific
Purification:	Saturated Ammonium Sulfate (SAS) precipitation
Conjugation:	Unconjugated
Storage:	Store the antibody undiluted at 2-8°C for one month or (in aliquots) at -20°C for longer. Avoid repeated freezing and thawing.
Stability:	Shelf life: one year from despatch.
Gene Name:	lysine methyltransferase 5C
Database Link:	Entrez Gene 84787 Human Q86Y97
Background:	SUV420H2 is a histone methyltransferase that specifically trimethylates 'Lys-20' of histone H4. H4 'Lys-20' trimethylation represents a specific tag for epigenetic transcriptional repression. The protein mainly functions in pericentric heterochromatin regions, thereby playing a central role in the establishment of constitutive heterochromatin in these regions. SUV420H1 is targeted to histone H3 via its interaction with RB1 family proteins (RB1, RBL1 and RBL2).
Synonyms:	Lysine N-methyltransferase 5C
Protein Families:	Druggable Genome



[View online »](#)

Protein Pathways: Lysine degradation

Product images:



Western blot analysis of SUV4-20H2 antibody (Center) in mouse stomach tissue lysates (35ug/lane). SUV4-20H2 (arrow) was detected using the purified Pab.