

Product datasheet for **AP17766PU-N**

SRP72 (Center) Rabbit Polyclonal Antibody

Product data:

Product Type:	Primary Antibodies
Applications:	FC, IF, IHC, WB
Recommended Dilution:	ELISA: 1/1,000. Western blotting: 1/100-1/500. Immunofluorescence: 1/10-1/50. Flow Cytometry: 1/10-1/50. Immunohistochemistry: 1/50-1/100.
Reactivity:	Human
Host:	Rabbit
Isotype:	Ig
Clonality:	Polyclonal
Immunogen:	KLH conjugated synthetic peptide between 126~156 amino acids from the Center region of Human SRP72
Specificity:	This antibody recognizes SRP72 (Center).
Formulation:	PBS with 0.09% (W/V) Sodium Azide as preservative State: Purified State: Liquid purified Ig fraction
Concentration:	lot specific
Purification:	Affinity Chromatography on Protein A
Conjugation:	Unconjugated
Storage:	Store the antibody undiluted at 2-8°C for one month or (in aliquots) at -20°C for longer. Avoid repeated freezing and thawing.
Stability:	Shelf life: one year from despatch.
Gene Name:	signal recognition particle 72kDa
Database Link:	Entrez Gene 6731 Human O76094



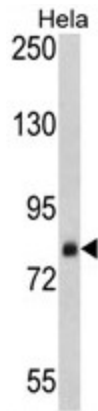
[View online »](#)

Background: Signal-recognition-particle assembly has a crucial role in targeting secretory proteins to the rough endoplasmic reticulum membrane. It binds the 7S RNA only in presence of SRP68. This ribonucleoprotein complex might interact directly with the docking protein in the ER membrane and possibly participate in the elongation arrest function.

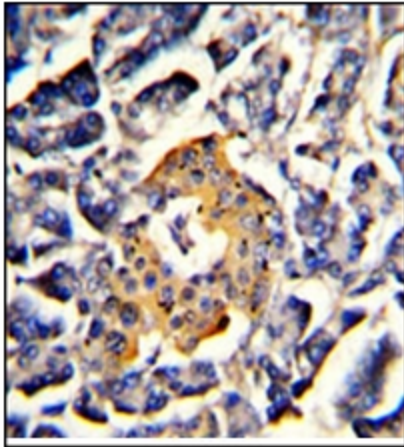
Synonyms: SRP72

Protein Pathways: Protein export

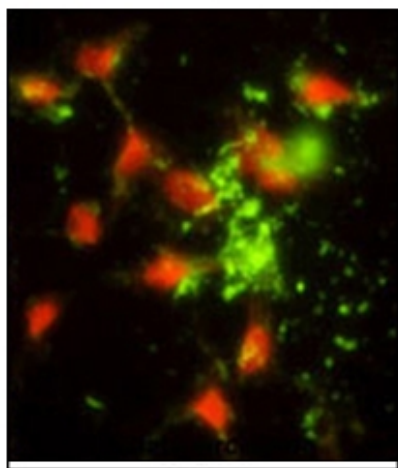
Product images:



Western blot analysis of SRP72 antibody in HeLa cell line lysates (35 ug/lane). SRP72 (arrow) was detected using the purified Pab.



SRP72 antibody staining of Formalin-Fixed, Paraffin-Embedded Human pancreas using peroxidase-conjugated to the secondary antibody, followed by DAB staining. This data demonstrates the use of this antibody for Immunohistochemistry. Clinical relevance has not been evaluated.



Immunofluorescence analysis of SRP72 antibody (Center) with HeLa cells. 0.025 mg/ml primary antibody was followed by FITC-conjugated Goat anti-Rabbit IgG (whole molecule). FITC emits green fluorescence. Red counterstaining is PI.