

Product datasheet for **AP17762PU-N**

SPINK5 (N-term) Rabbit Polyclonal Antibody

Product data:

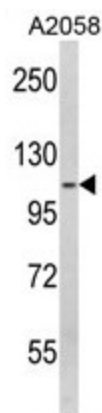
Product Type:	Primary Antibodies
Applications:	FC, IHC, WB
Recommended Dilution:	ELISA: 1/1,000. Western blotting: 1/1000. FC: 1/10-1/50. IHC: 1/10-1/50.
Reactivity:	Human
Host:	Rabbit
Clonality:	Polyclonal
Immunogen:	KLH conjugated synthetic peptide selected between 188-217 amino acids from the N-terminal region of human SPINK5
Specificity:	This antibody reacts to SPINK5.
Formulation:	PBS with 0.09% (W/V) sodium azide State: Liquid purified Ig
Concentration:	lot specific
Purification:	Affinity chromatography on Protein A
Conjugation:	Unconjugated
Storage:	Store the antibody undiluted at 2-8°C for one month or (in aliquots) at -20°C for longer. Avoid repeated freezing and thawing.
Stability:	Shelf life: one year from despatch.
Gene Name:	Homo sapiens serine peptidase inhibitor, Kazal type 5 (SPINK5), transcript variant 2
Database Link:	Entrez Gene 11005 Human Q9NQ38
Background:	SPINK5 is a multidomain serine protease inhibitor that contains 15 potential inhibitory domains. The inhibitor may play a role in skin and hair morphogenesis and anti-inflammatory and/or antimicrobial protection of mucous epithelia. Mutations may result in Netherton syndrome, a disorder characterized by ichthyosis, defective cornification, and atopy.



[View online »](#)

Synonyms: LEKTI

Product images:



Western blot analysis of SPINK5 Antibody (N-term) in A2058 cell line lysates (35ug/lane). SPINK5 (arrow) was detected using the purified Pab.