

Product datasheet for **AP17761PU-N**

SPCS3 (C-term) Rabbit Polyclonal Antibody

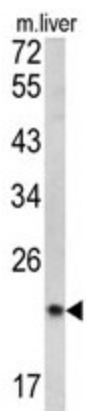
Product data:

Product Type:	Primary Antibodies
Applications:	WB
Recommended Dilution:	ELISA: 1/1,000. Western blotting: 1/50 - 1/100.
Reactivity:	Human, Mouse
Host:	Rabbit
Clonality:	Polyclonal
Immunogen:	KLH conjugated synthetic peptide selected from the C-terminal region of human SPCS3
Specificity:	This antibody reacts to SPCS3.
Formulation:	PBS with 0.09% (W/V) sodium azide State: Liquid purified Ig
Concentration:	lot specific
Purification:	Saturated Ammonium Sulfate (SAS) precipitation
Conjugation:	Unconjugated
Storage:	Store the antibody undiluted at 2-8°C for one month or (in aliquots) at -20°C for longer. Avoid repeated freezing and thawing.
Stability:	Shelf life: one year from despatch.
Gene Name:	signal peptidase complex subunit 3
Database Link:	Entrez Gene 76687 Mouse Entrez Gene 60559 Human P61009
Background:	SPCS3 is a component of the microsomal signal peptidase complex which removes signal peptides from nascent proteins as they are translocated into the lumen of the endoplasmic reticulum.
Synonyms:	Signal peptidase complex subunit 3, SPC22/23
Protein Families:	Protease, Transmembrane



[View online »](#)

Product images:



Western blot analysis of SPCS3 antibody (C-term) in mouse liver tissue lysates (35ug/lane). SPCS3 (arrow) was detected using the purified Pab.