

Product datasheet for **AP17760PU-N**

SERPINB3 (N-term) Rabbit Polyclonal Antibody

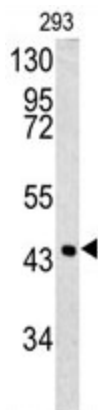
Product data:

Product Type:	Primary Antibodies
Applications:	WB
Recommended Dilution:	ELISA: 1/1,000. Western blotting: 1/50 - 1/100.
Reactivity:	Human
Host:	Rabbit
Clonality:	Polyclonal
Immunogen:	KLH conjugated synthetic peptide selected from the N-terminal region of human SPB3
Specificity:	This antibody reacts to SPB3.
Formulation:	PBS with 0.09% (W/V) sodium azide State: Liquid purified Ig
Concentration:	lot specific
Purification:	Saturated Ammonium Sulfate (SAS) precipitation
Conjugation:	Unconjugated
Storage:	Store the antibody undiluted at 2-8°C for one month or (in aliquots) at -20°C for longer. Avoid repeated freezing and thawing.
Stability:	Shelf life: one year from despatch.
Gene Name:	serpin family B member 3
Database Link:	Entrez Gene 6317 Human P29508
Background:	SPB3 may act as a protease inhibitor to modulate the host immune response against tumor cells.
Synonyms:	Serpin B3, SCCA-1, SCCA
Protein Families:	Druggable Genome, Secreted Protein



[View online »](#)

Product images:



Western blot analysis of SPB3 antibody (N-term) in 293 cell line lysates (35ug/lane). SPB3 (arrow) was detected using the purified Pab.