

## Product datasheet for **AP17759PU-N**

### SPARC (C-term) Rabbit Polyclonal Antibody

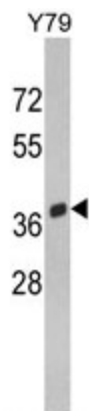
#### Product data:

Product Type:	Primary Antibodies
Applications:	WB
Recommended Dilution:	ELISA: 1/1,000. Western blotting: 1/50 - 1/100.
Reactivity:	Human
Host:	Rabbit
Clonality:	Polyclonal
Immunogen:	KLH conjugated synthetic peptide selected from the C-terminal region of human SPARC
Specificity:	This antibody reacts to Osteonectin.
Formulation:	PBS with 0.09% (W/V) sodium azide State: Liquid purified Ig
Concentration:	lot specific
Purification:	Affinity chromatography on Protein G
Conjugation:	Unconjugated
Storage:	Store the antibody undiluted at 2-8°C for one month or (in aliquots) at -20°C for longer. Avoid repeated freezing and thawing.
Stability:	Shelf life: one year from despatch.
Gene Name:	secreted protein acidic and cysteine rich
Database Link:	<a href="#">Entrez Gene 6678 Human P09486</a>
Background:	Secreted protein acidic and rich in cysteine/osteonectin/BM40, or SPARC, is a matrix-associated protein that elicits changes in cell shape, inhibits cell-cycle progression, and influences the synthesis of extracellular matrix (ECM).
Synonyms:	ON, Basement-membrane protein 40, BM-40
Protein Families:	Druggable Genome



[View online »](#)

## Product images:



Western blot analysis of SPARC Antibody (C-term) in Y79 cell line lysates (35ug/lane). SPARC (arrow) was detected using the purified Pab.