

Product datasheet for **AP17757PU-N**

Superoxide Dismutase 3 (SOD3) (N-term) Rabbit Polyclonal Antibody

Product data:

Product Type:	Primary Antibodies
Applications:	WB
Recommended Dilution:	ELISA: 1/1,000. Western blotting: 1/50 - 1/100.
Reactivity:	Human
Host:	Rabbit
Clonality:	Polyclonal
Immunogen:	KLH conjugated synthetic peptide selected from the N-terminal region of human SOD3
Specificity:	This antibody reacts to SOD3.
Formulation:	PBS with 0.09% (W/V) sodium azide State: Liquid purified Ig
Concentration:	lot specific
Purification:	Saturated Ammonium Sulfate (SAS) precipitation
Conjugation:	Unconjugated
Storage:	Store the antibody undiluted at 2-8°C for one month or (in aliquots) at -20°C for longer. Avoid repeated freezing and thawing.
Stability:	Shelf life: one year from despatch.
Gene Name:	superoxide dismutase 3, extracellular
Database Link:	Entrez Gene 6649 Human P08294
Background:	SOD3 is a member of the superoxide dismutase(SOD) protein family. SODs are antioxidant enzymes that catalyze the dismutation of two superoxide radicals into hydrogen peroxide and oxygen. This protein is thought to protect the brain, lungs, and other tissues from oxidative stress. The protein is secreted into the extracellular space and forms a glycosylated homotetramer that is anchored to the extracellular matrix (ECM) and cell surfaces through an interaction with heparan sulfate proteoglycan and collagen. A fraction of the protein is cleaved near the C-terminus before secretion to generate circulating tetramers that do not interact with the ECM.

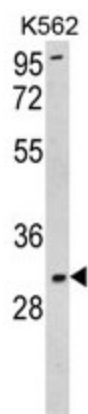


[View online »](#)

Synonyms: SOD-3, EC-SOD, Extracellular superoxide dismutase [Cu-Zn]

Protein Families: Druggable Genome, Secreted Protein

Product images:



Western blot analysis of SOD3 Antibody (N-term) in K562 cell line lysates (35ug/lane). SOD3 (arrow) was detected using the purified Pab.