

Product datasheet for **AP17751PU-N**

SMYD3 (N-term) Rabbit Polyclonal Antibody

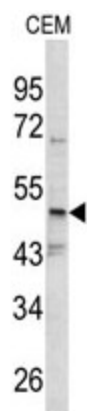
Product data:

Product Type:	Primary Antibodies
Applications:	WB
Recommended Dilution:	ELISA: 1/1,000. Western blotting: 1/50 - 1/100.
Reactivity:	Human
Host:	Rabbit
Clonality:	Polyclonal
Immunogen:	KLH conjugated synthetic peptide selected from the N-terminal region of human SMYD3
Specificity:	This antibody reacts to SMYD3.
Formulation:	PBS with 0.09% (W/V) sodium azide State: Liquid purified Ig
Concentration:	lot specific
Purification:	Saturated Ammonium Sulfate (SAS) precipitation
Conjugation:	Unconjugated
Storage:	Store the antibody undiluted at 2-8°C for one month or (in aliquots) at -20°C for longer. Avoid repeated freezing and thawing.
Stability:	Shelf life: one year from despatch.
Gene Name:	SET and MYND domain containing 3
Database Link:	Entrez Gene 64754 Human Q9H7B4
Background:	SMYD3 is a histone methyltransferase that plays a role in transcriptional regulation as a member of an RNA polymerase complex.
Synonyms:	ZMYND1, ZNFN3A1



[View online »](#)

Product images:



Western blot analysis of SMYD3 antibody (N-term) in CEM cell line lysates (35ug/lane). SMYD3 (arrow) was detected using the purified Pab.