

Product datasheet for **AP17749PU-N**

SLC38A3 (Center) Rabbit Polyclonal Antibody

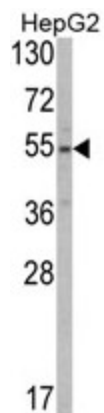
Product data:

Product Type:	Primary Antibodies
Applications:	WB
Recommended Dilution:	ELISA: 1/1,000. Western blotting: 1/50 - 1/100.
Reactivity:	Human
Host:	Rabbit
Clonality:	Polyclonal
Immunogen:	KLH conjugated synthetic peptide selected from the Center region of human SLC38A3
Specificity:	This antibody reacts to SLC38A3.
Formulation:	PBS with 0.09% (W/V) sodium azide State: Liquid purified Ig
Concentration:	lot specific
Purification:	Saturated Ammonium Sulfate (SAS) precipitation
Conjugation:	Unconjugated
Storage:	Store the antibody undiluted at 2-8°C for one month or (in aliquots) at -20°C for longer. Avoid repeated freezing and thawing.
Stability:	Shelf life: one year from despatch.
Gene Name:	solute carrier family 38 member 3
Database Link:	Entrez Gene 10991 Human Q99624
Background:	SLC38A3 is sodium-dependent amino acid/proton antiporter. It mediates electrogenic cotransport of glutamine and sodium ions in exchange for protons and also recognizes histidine, asparagine and alanine. This protein may mediate amino acid transport in either direction under physiological conditions. It may play a role in nitrogen metabolism and synaptic transmission.
Synonyms:	SNAT3, NAT1, SN1, G17
Protein Families:	Transmembrane



[View online »](#)

Product images:



Western blot analysis of SLC38A3 Antibody (Center) in HepG2 cell line lysates (35ug/lane). SLC38A3 (arrow) was detected using the purified Pab.