

Product datasheet for **AP17745PU-N**

SIL1 (Center) Rabbit Polyclonal Antibody

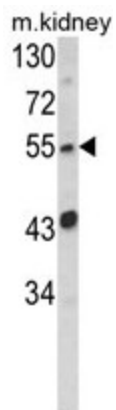
Product data:

Product Type:	Primary Antibodies
Applications:	WB
Recommended Dilution:	ELISA: 1/1,000. Western blotting: 1/100 - 1/500.
Reactivity:	Human, Mouse
Host:	Rabbit
Clonality:	Polyclonal
Immunogen:	KLH conjugated synthetic peptide selected from the Center region of human SIL1
Specificity:	This antibody reacts to SIL1 / BAP.
Formulation:	PBS with 0.09% (W/V) sodium azide State: Liquid purified Ig
Concentration:	lot specific
Purification:	Affinity chromatography on Protein A
Conjugation:	Unconjugated
Storage:	Store the antibody undiluted at 2-8°C for one month or (in aliquots) at -20°C for longer. Avoid repeated freezing and thawing.
Stability:	Shelf life: one year from despatch.
Gene Name:	SIL1 nucleotide exchange factor
Database Link:	Entrez Gene 64374 Human Q9H173
Background:	SIL1 IS a resident endoplasmic reticulum (ER), N-linked glycoprotein with an N-terminal ER targeting sequence, 2 putative N-glycosylation sites, and a C-terminal ER retention signal. This protein functions as a nucleotide exchange factor for another unfolded protein response protein.
Synonyms:	BiP-associated protein
Protein Families:	Protease, Secreted Protein, Transmembrane



[View online »](#)

Product images:



Western blot analysis of SIL1 Antibody (Center) in mouse kidney tissue lysates (35ug/lane).SIL1 (arrow) was detected using the purified Pab.