

## Product datasheet for **AP17743PU-N**

### SFRS5 (SRSF5) (Center) Rabbit Polyclonal Antibody

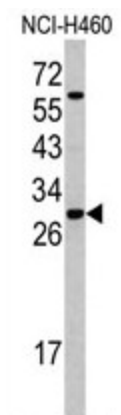
#### Product data:

Product Type:	Primary Antibodies
Applications:	WB
Recommended Dilution:	ELISA: 1/1,000. Western blotting: 1/50 - 1/100.
Reactivity:	Human
Host:	Rabbit
Clonality:	Polyclonal
Immunogen:	KLH conjugated synthetic peptide selected from the Center region of human SFRS5
Specificity:	This antibody reacts to SFRS5.
Formulation:	PBS with 0.09% (W/V) sodium azide State: Liquid purified Ig
Concentration:	lot specific
Purification:	Saturated Ammonium Sulfate (SAS) precipitation
Conjugation:	Unconjugated
Storage:	Store the antibody undiluted at 2-8°C for one month or (in aliquots) at -20°C for longer. Avoid repeated freezing and thawing.
Stability:	Shelf life: one year from despatch.
Gene Name:	serine/arginine-rich splicing factor 5
Database Link:	<a href="#">Entrez Gene 6430 Human Q13243</a>
Background:	SFRS5 plays a role in constitutive splicing and can modulate the selection of alternative splice sites.
Synonyms:	SRP40, HRS
Protein Pathways:	Spliceosome



[View online »](#)

## Product images:



Western blot analysis of SFRS5 antibody (Center Y85) in NCI-H460 cell line lysates (35ug/lane). SFRS5 (arrow) was detected using the purified Pab.